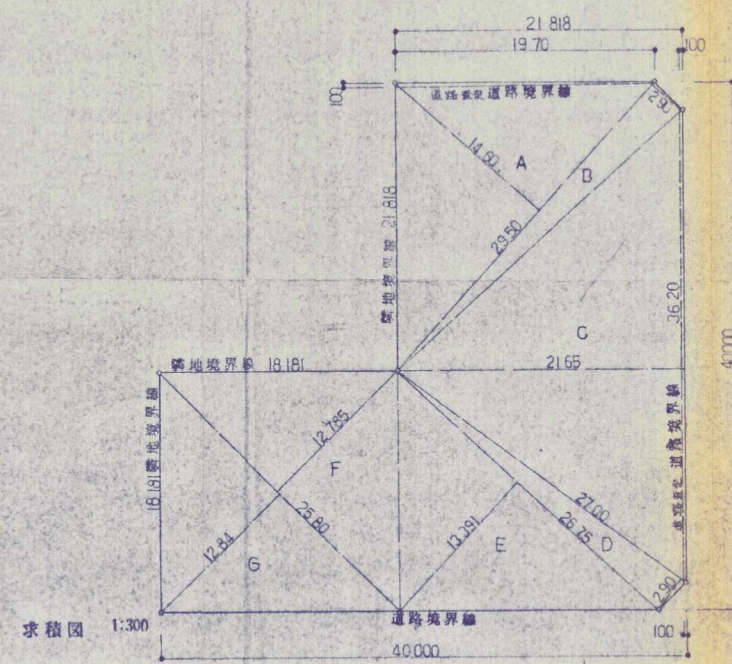
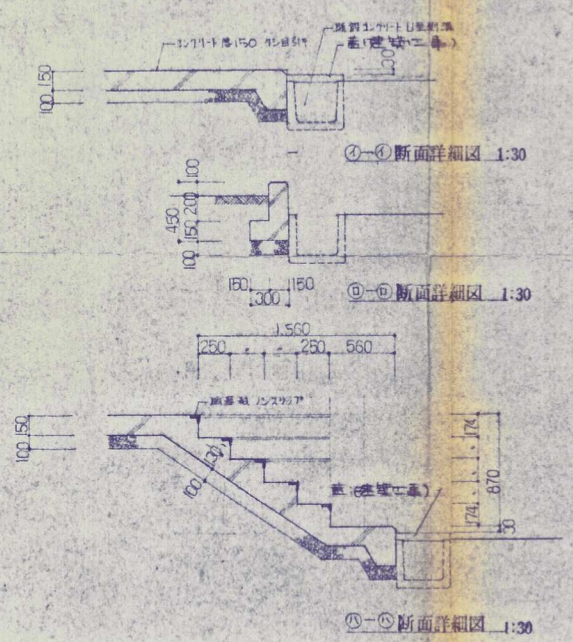


配置図 1:200



求積表

A	$29.50 \times 14.60 \times \frac{1}{2} - 19.70 \times 0.10 \times \frac{1}{2}$	= 214.365
B	$29.50 \times 2.90 \times \frac{1}{2}$	= 42.77
C	$36.20 \times 21.65 \times \frac{1}{2} - 36.20 \times 0.10$	= 388.24
D	$27.00 \times 2.90 \times \frac{1}{2}$	= 39.15
E	$25.75 \times 12.785 \times \frac{1}{2}$	= 179.10
F	$25.80 \times 12.785 \times \frac{1}{2}$	= 164.90
G	$25.30 \times 12.84 \times \frac{1}{2}$	= 165.64
合計		1194.195 m ²

附近見取図

