

$$\textcircled{1} 8.05 \times 3.65 = 29.3825$$

$$\text{計} \quad 29.3825$$

$$= \text{陸} \quad 12.6929$$

$$\textcircled{1} 4.05 (1.20 + 0.25) = 5.8725$$

$$\textcircled{2} 5.95 (2.35 + 2.85) = 30.94$$

$$\textcircled{3} 5.95 \times 1.65 = 9.8175$$

$$\text{計} \quad 46.630$$

$$= \text{陸} \quad 23.3113$$

$$\textcircled{4} 13.85 (3.65 + 6.65) = 122.655$$

$$\textcircled{5} 9.80 \times 1.10 = 10.780$$

$$\textcircled{6} 7.40 \times 2.30 = 17.020$$

$$\text{計} \quad 170.455$$

$$= \text{陸} \quad 85.2274$$

$$14.05 (6.45 + 6.65) = 184.055$$

$$= \text{陸} \quad 92.0275$$

$$\textcircled{1} 7.65 (3.05 + 2.95) = 45.90$$

$$\textcircled{2} 4.65 \times 0.8 = 3.72$$

$$\textcircled{3} 3.20 \times 1.35 = 4.32$$

$$\text{計} \quad 54.270$$

$$= \text{陸} \quad 27.1350$$

$$\textcircled{4} 3.65 \times 0.80 = 2.920$$

$$\text{計} \quad 29.2$$

$$= \text{陸} \quad 14.6000$$

$$\textcircled{1} 6.50 (1.85 + 2.25) = 20.150$$

$$\textcircled{2} 3.30 (2.85 + 1.20) = 10.395$$

$$\textcircled{3} 6.85 \times 1.35 = 9.2475$$

$$\textcircled{4} 7.65 \times 1.90 = 14.535$$

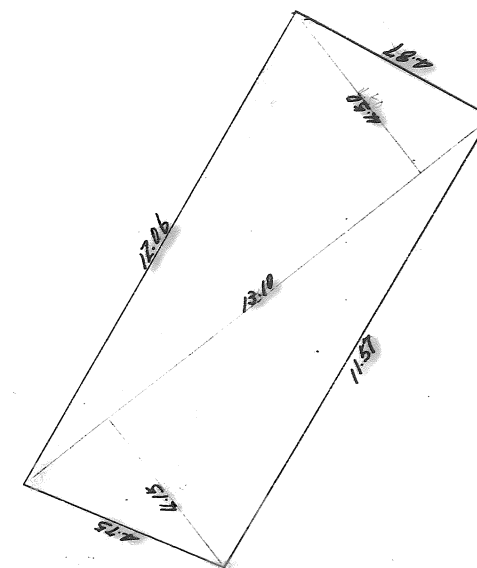
$$\textcircled{5} 8.70 (0.65 + 1.20) = 16.095$$

$$\textcircled{6} 7.15 \times 2.90 = 20.735$$

$$\textcircled{7} 3.90 \times 1.20 = 4.680$$

$$\text{計} \quad 95.1625$$

$$= \text{陸} \quad 47.58125$$



$$13.10 (4.50 + 4.15) = 133.575$$

$$= \text{陸} \quad 66.7875$$

$$\textcircled{1} 11.92 \times 3.85 = 45.8920$$

$$\textcircled{2} 11.92 \times 3.87 = 46.1004$$

$$\text{計} \quad 92.02$$

$$= \text{陸} \quad 46.01$$

$$\textcircled{1} 12.14 \times 3.78 = 45.8892$$

$$\textcircled{2} 12.14 \times 3.80 = 46.1320$$

$$\text{計} \quad 92.02$$

$$= \text{陸} \quad 46.01$$