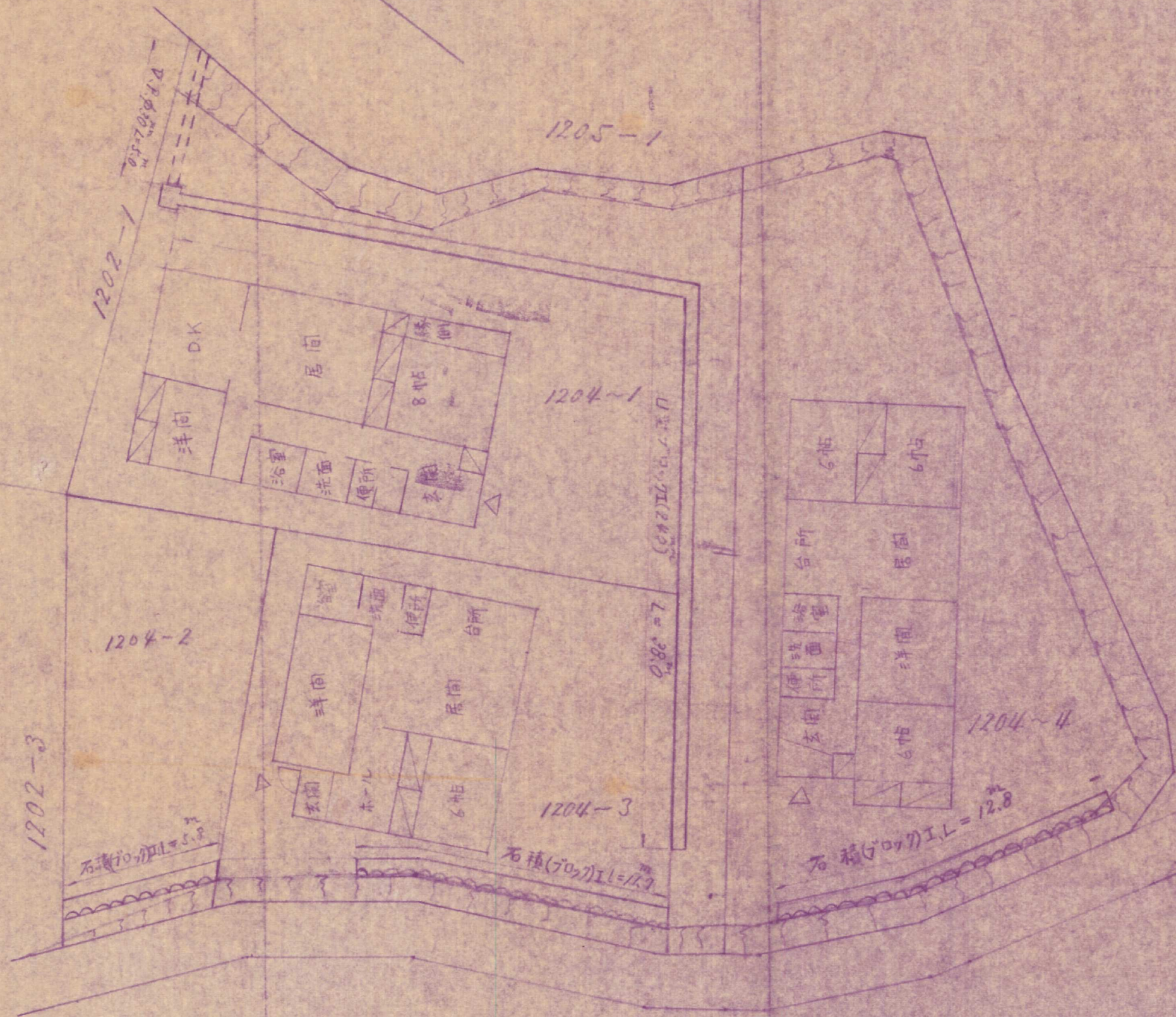


縮尺 = 1:200



Hand-drawn cross-section diagram of a trapezoidal channel. The top width is 35, the bottom width is 30, and the height is 65. The slope is indicated as 1:0.8. The channel is filled with stone, and the bottom is also lined with stone. The channel is shown in a plan view, with a cross-section line indicated by a dashed line and a 1:0.8 slope.

Technical drawing of a U-shaped structure, likely a mold or container. The drawing shows a top-down view with dimensions in millimeters (mm). The overall width is 330 mm, and the overall height is 440 mm. The inner width of the U-shape is 240 mm, and the inner height is 240 mm. The thickness of the walls is 45 mm. The base of the U-shape is 75 mm wide. The bottom of the structure is 340 mm wide. The drawing includes a dashed line indicating the inner contour of the U-shape.