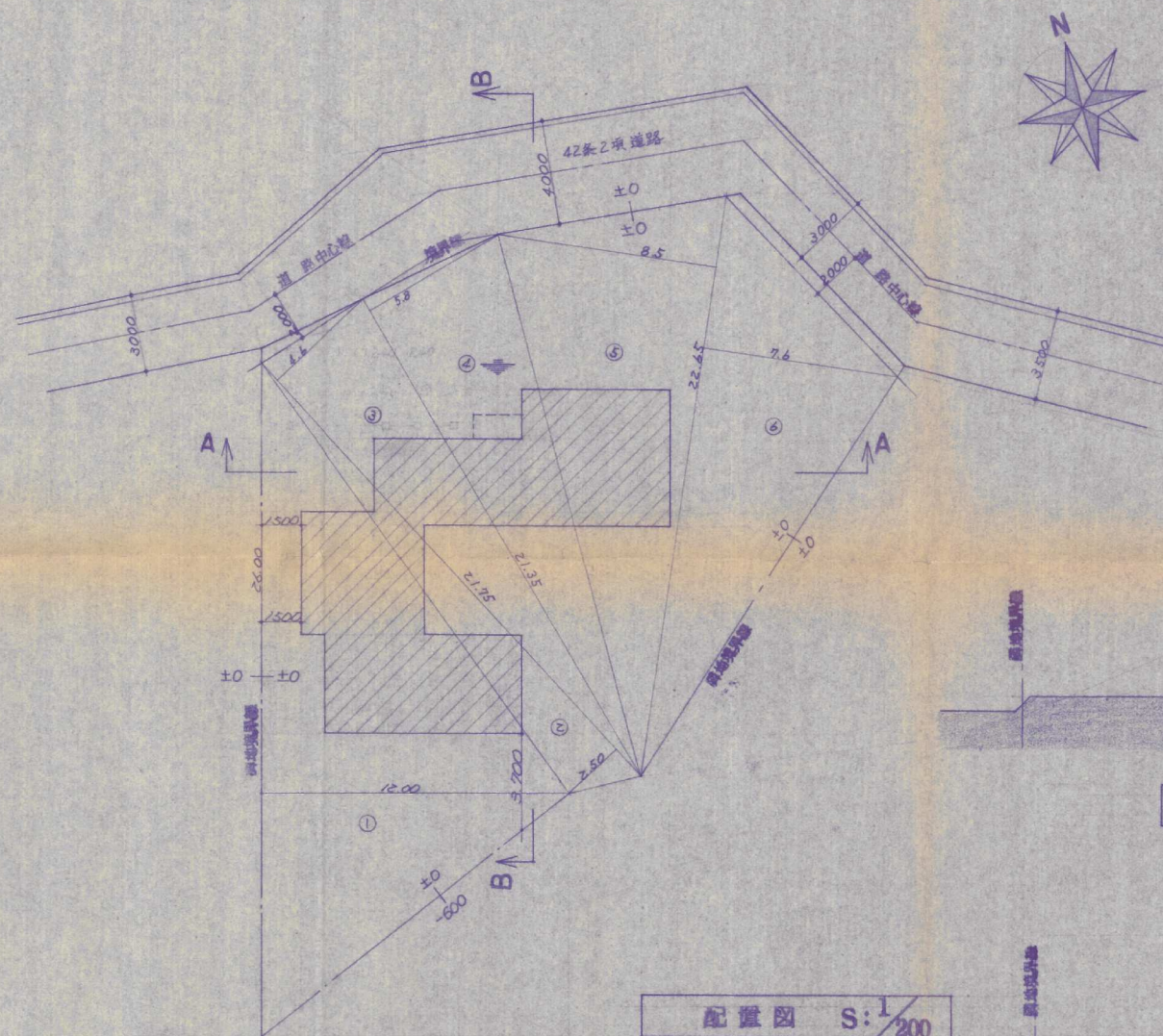


附近見取図



B-B断面図

A-A断面図

地積

①	26.00	×	12.00	=	312.00
②	21.75	×	2.50	=	54.375
③	21.75	×	4.60	=	100.05
④	21.35	×	5.8	=	123.83
⑤	22.65	×	8.5	=	192.525
⑥	22.65	×	7.6	=	172.14

合 計 954.92
1/2 477.46