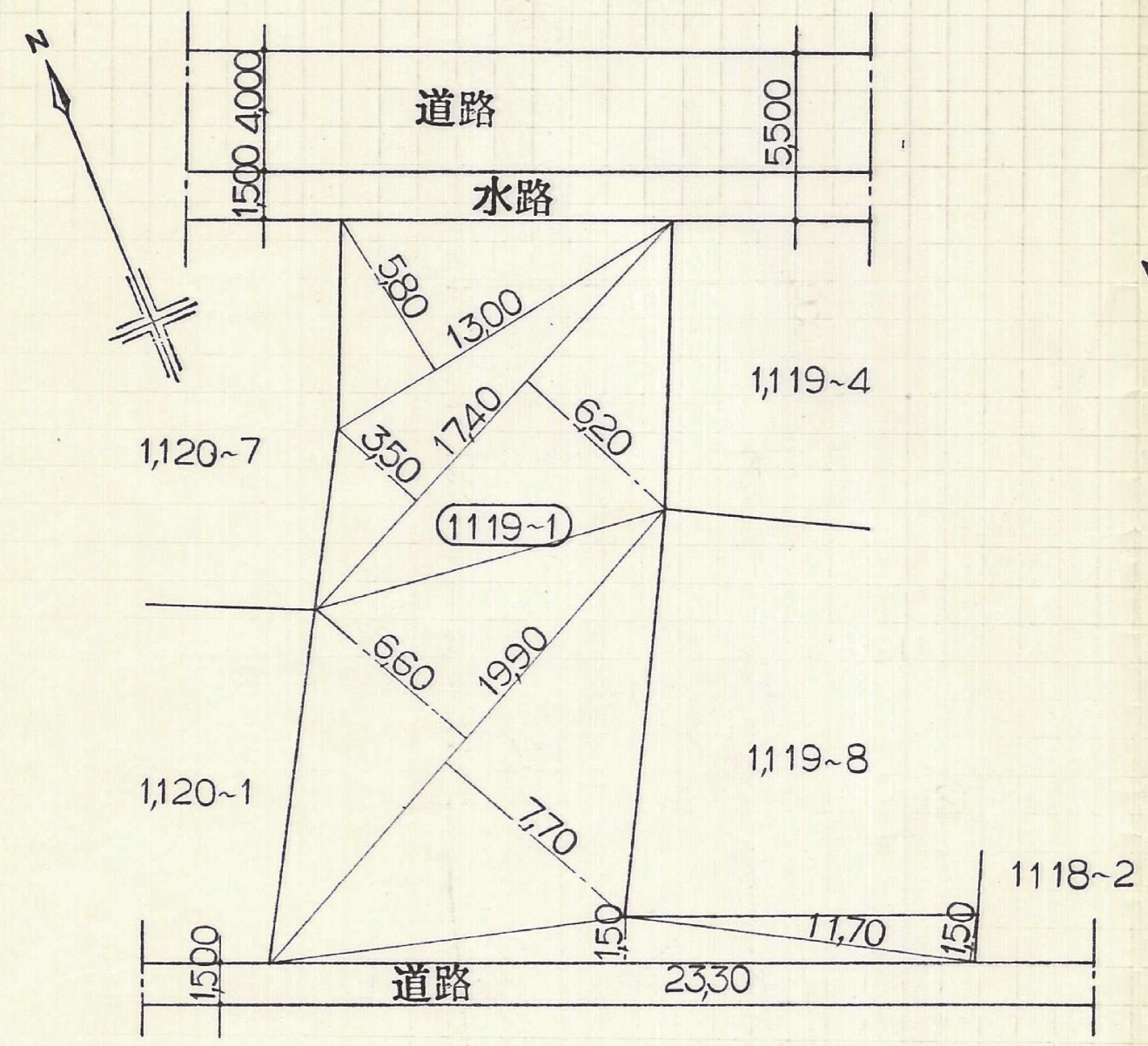


丈量図

北九州市八幡西区大字笹田字楠元 縮尺=1:250



1119~1

①	13,00×580	=75,4000
②	17,40×(3,50+6,20)	=168,7800
③	19,90×(6,60+7,80)	=286,5600
④	23,30×1,50	=34,9500
⑤	11,70×1,50	=17,5500
		=583,2400
	$\frac{1}{2}$	=291,6200 m^2

配置図

縮尺=1:250

