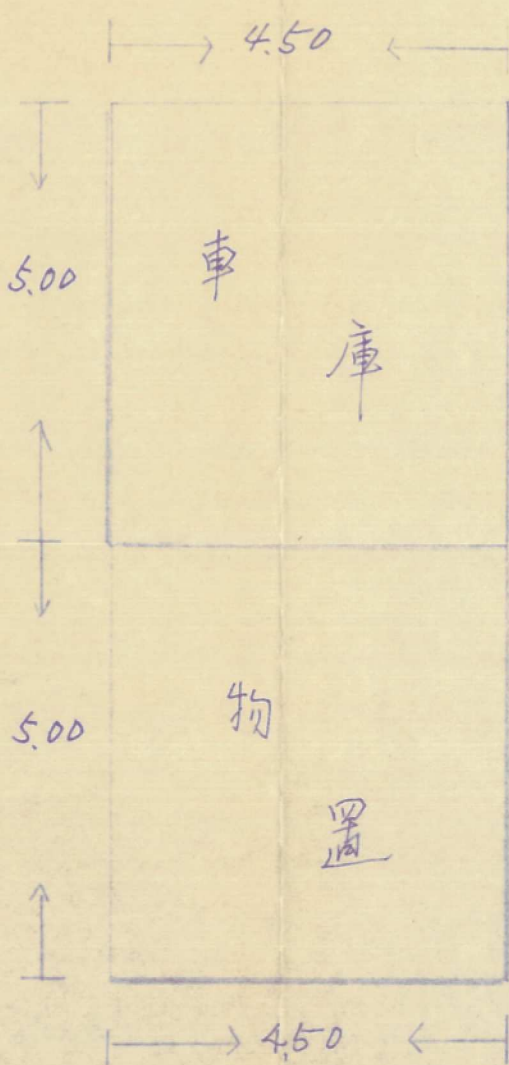
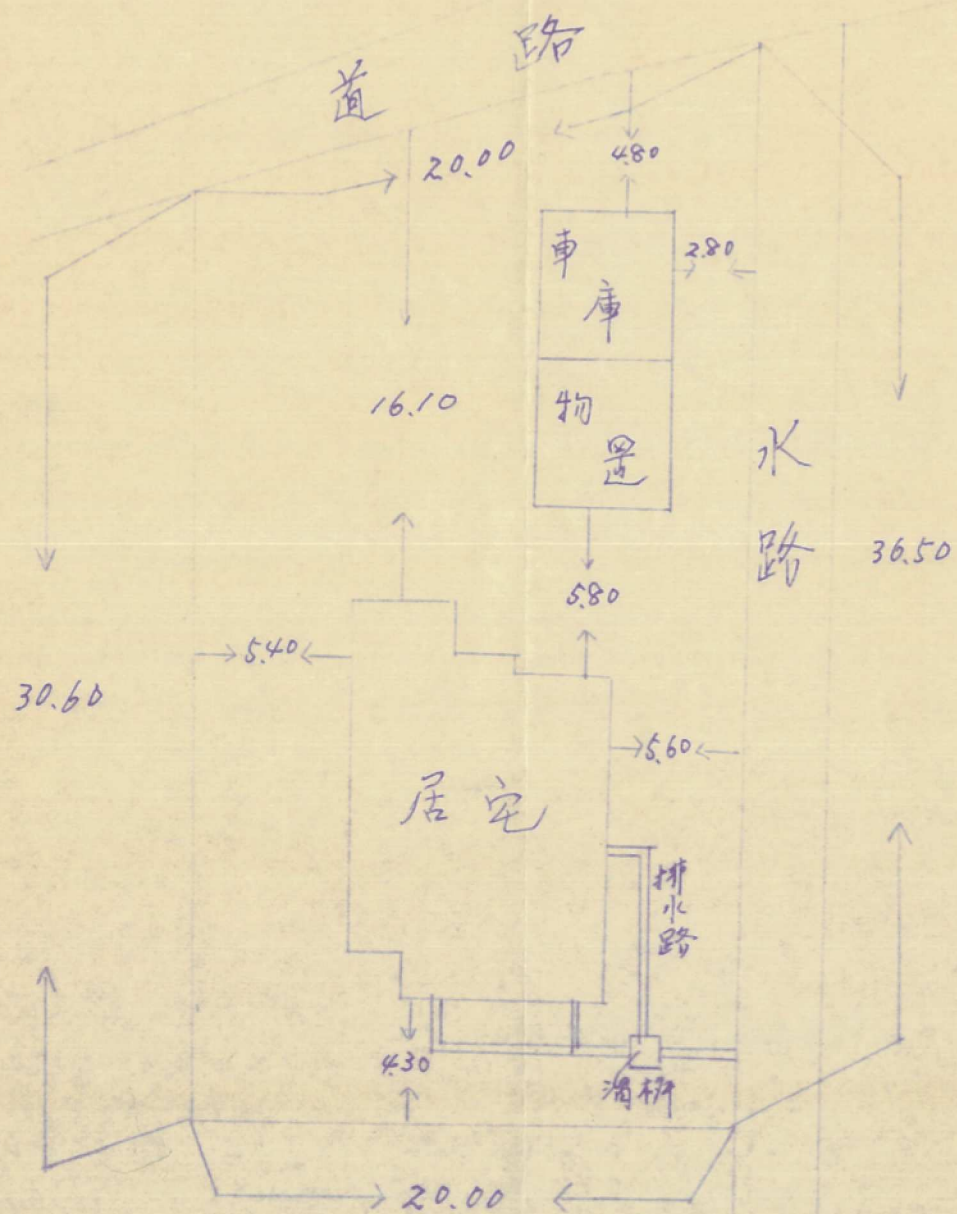


配置図 $\frac{1}{300}$



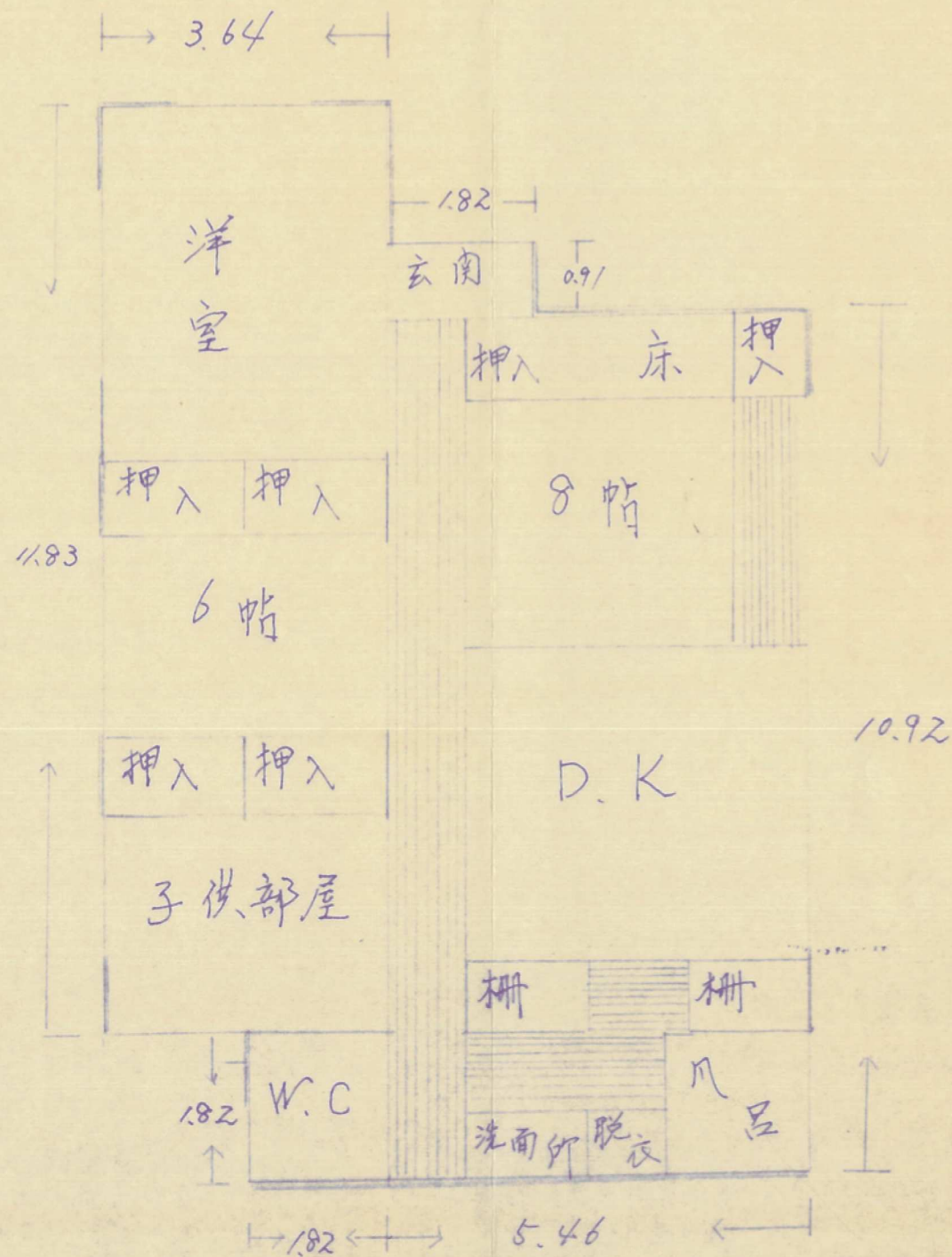
$$4.50 \times 5.00 = 22.5000$$

$$4.50 \times 5.00 = 22.5000$$

$$\text{合計 } 45.0000$$

床面積 45.00

平面図 $\frac{1}{100}$



$$0.91 \times 1.82 = 1.6562$$

$$10.92 \times 5.46 = 59.6232$$

$$11.83 \times 3.64 = 43.0612$$

$$1.82 \times 1.82 = 3.3124$$

$$\text{合計 } 107.6530$$

床面積 107.65 m^2