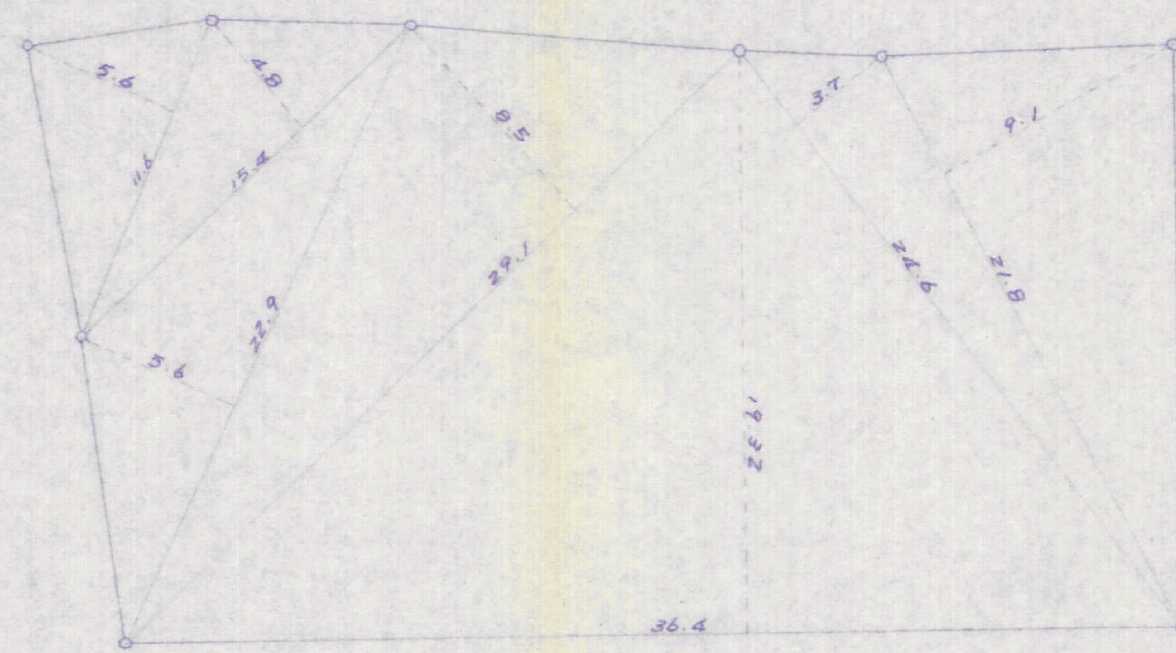


求積図

$S = 1/300$

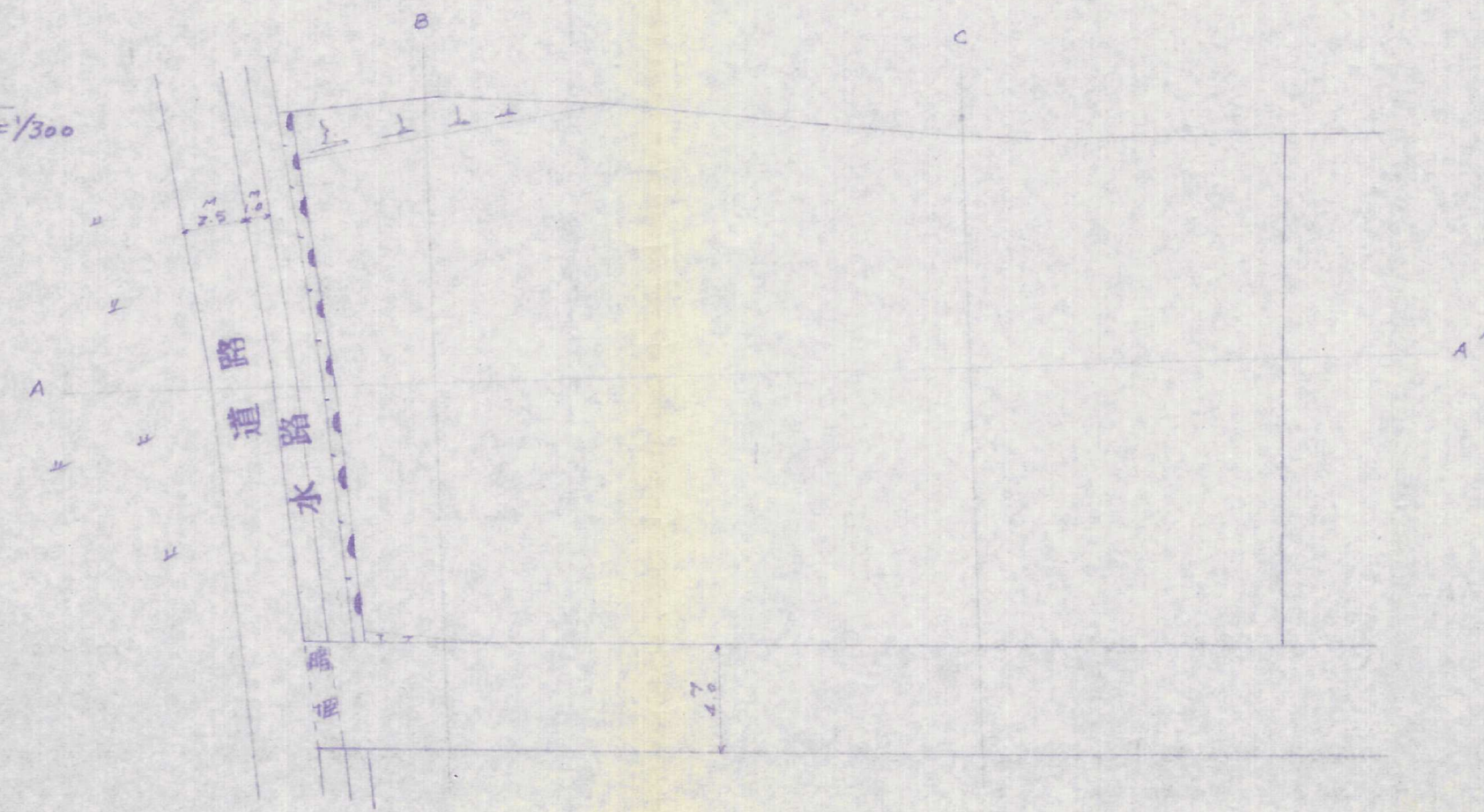


求積

11.6	×	5.6	=	64.96
15.4	×	4.8	=	73.92
22.9	×	5.6	=	128.24
29.1	×	8.5	=	247.35
36.4	×	19.32	=	703.248
24.6	×	3.7	=	91.02
21.8	×	9.1	=	198.38
合計				= 1507.118
二除				= 753.559 ^{m²}

平面図

$S = 1/300$



土地家屋調査士 栗原義雄

北九州市小倉北区田町12番9号