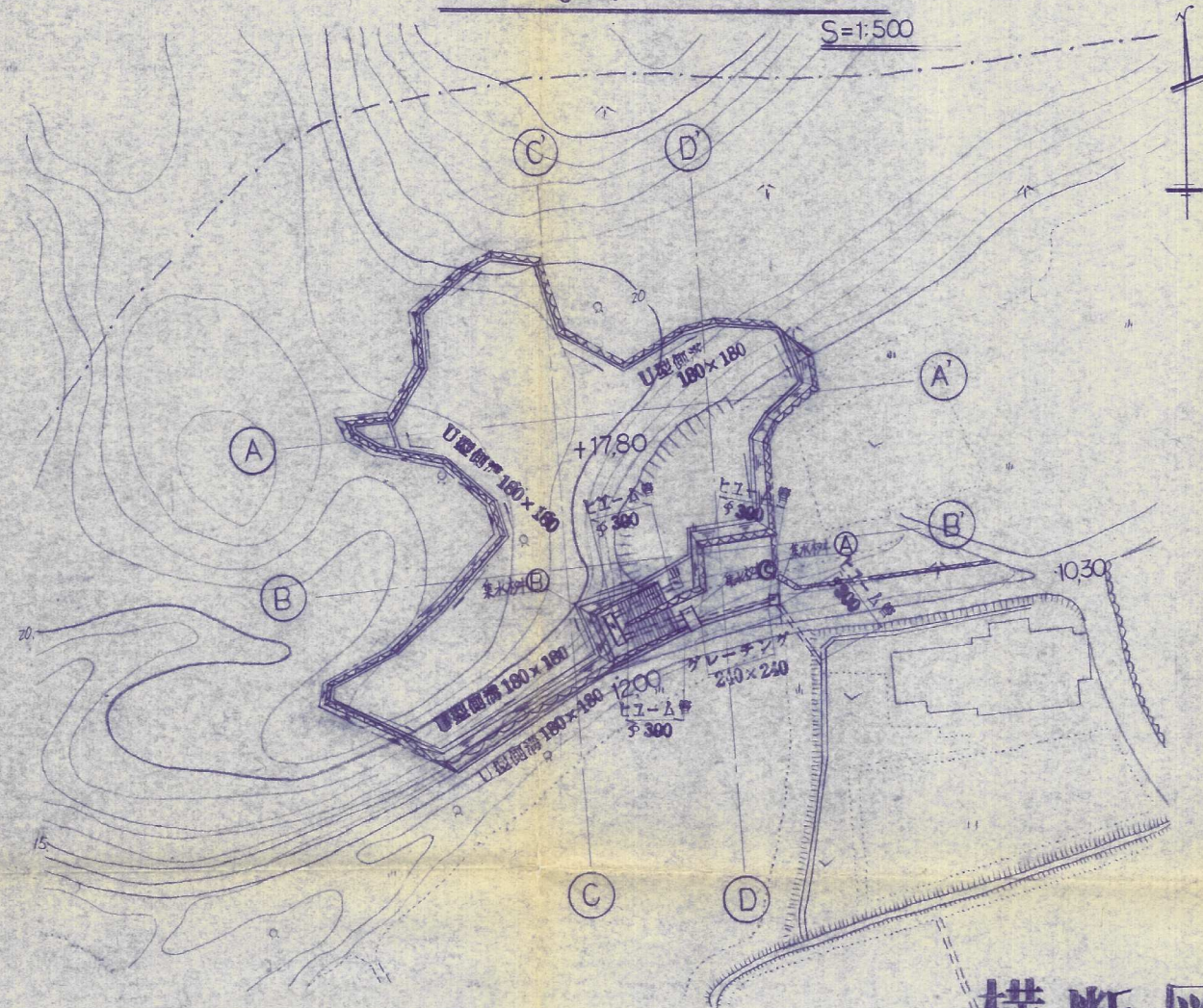
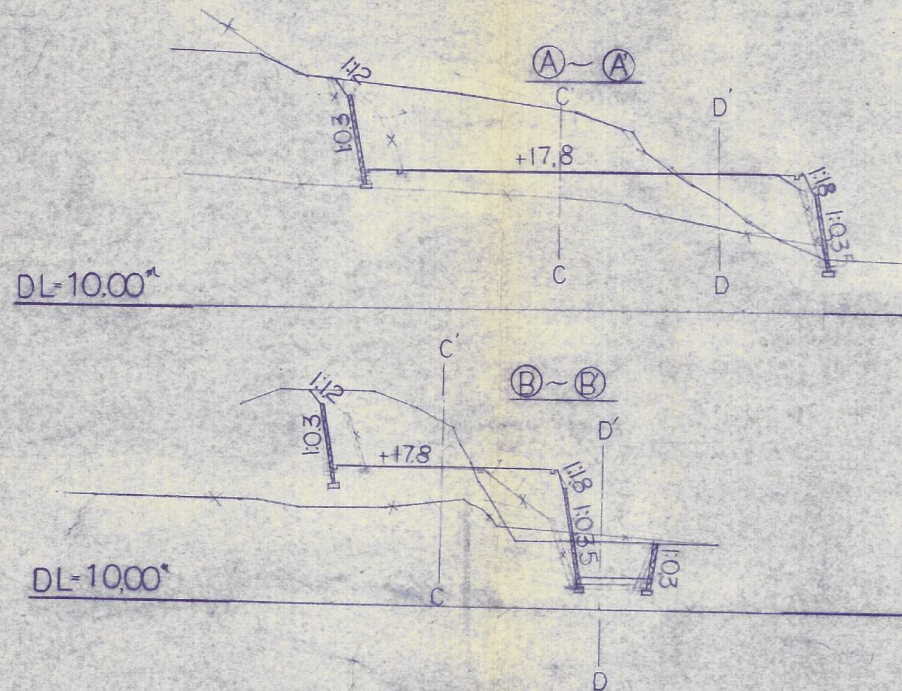


計画平面図



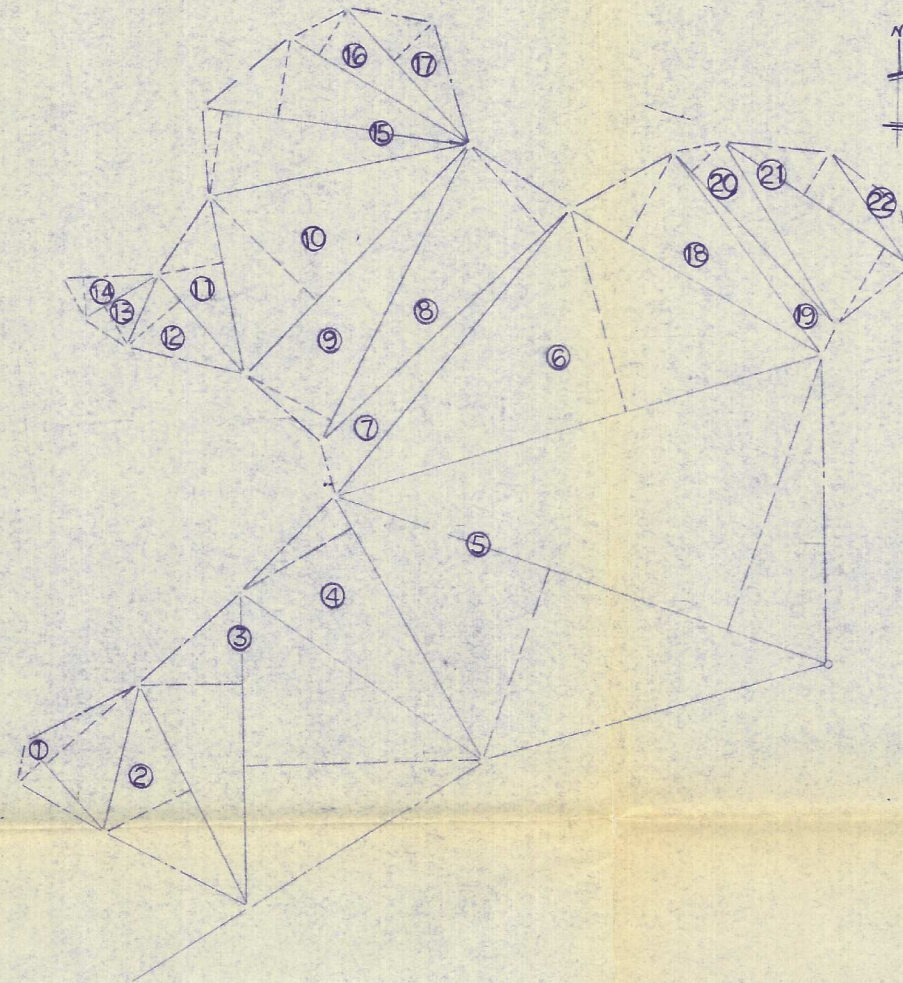
横断面図

S=1:300
1:500



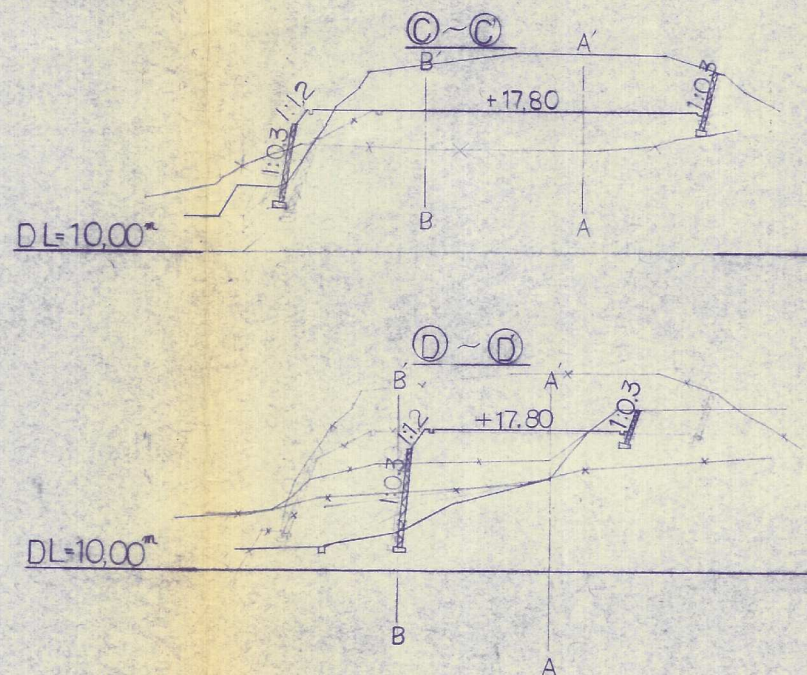
求積図

S=1:300



求積計算表

1	6.75 x (1.80+6.80)	=	58.050
2	13.70 x 5.40	=	73.980
3	7.60 x (5.80+13.30)	=	53.610
4	16.80 x 7.10	=	119.280
5	2.90 x (11.20+16.00)	=	78.800
6	28.20 x 11.40	=	321.480
7	20.50 x 2.50	=	51.250
8	18.80 x 6.30	=	118.440
9	18.30 x 5.40	=	98.820
10	17.80 x 8.20	=	145.960
11	10.00 x 3.60	=	36.000
12	7.20 x 3.80	=	27.360
13	4.80 x 2.40	=	11.520
14	5.20 x 2.40	=	12.480
15	15.00 x (4.70+4.60)	=	139.500
16	11.60 x 2.80	=	32.480
17	10.20 x 3.00	=	30.600
18	16.00 x 5.60	=	89.600
19	13.70 x 6.60	=	90.380
20	13.00 x 2.40	=	31.200
21	12.40 x (2.90+5.00)	=	95.480
22	7.60 x 1.40	=	10.640
合計			2645.600
平均			1322.800
1322.800 x 0.3025			400.000
			400.000



場所	北九州市小倉南区大字新網
図名	計画平面図・求積図 横断面図
設計	北九州市小倉北区堅町2丁目2-3 太平開発株式会社 TEL 591-2470