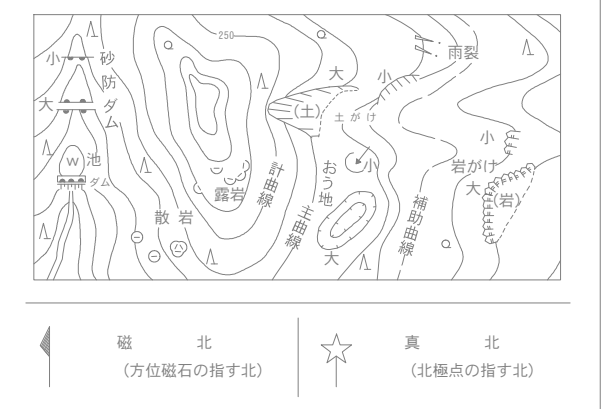
[illegible][illegible]

日	田	果樹園	園庭
▽	▽	その池の 樹木	山麓地
▽	さとう 糖	芝地	はい松地
▽	パイナ ップル 糖	広葉 樹林	しの地
▽	桑糖	針 葉 樹 林	やし松 樹林
△	茶糖	竹林	運地

The schematic diagram illustrates the water supply system for the Kamaishi City Water Treatment Plant. It shows the flow from various sources through different types of pipes and structures to the treatment plant. Key components include:

- Water Sources:** Groundwater (大・小), surface water (地上), and air (空間).
- Pipes and Structures:** Large pipes (大), small pipes (小), underground pipes (地下), and open channels (空間). Specific structures like gate valves (水門) and check valves (逆止弁) are indicated.
- Treatment Processes:** The diagram shows water passing through processes such as sedimentation (沈降), filtration (濾過), and disinfection (消毒).
- Storage and Distribution:** Water is stored in reservoirs (貯水池) and distributed through a network of pipes to the city (市内).



11 - LF 35 - 2