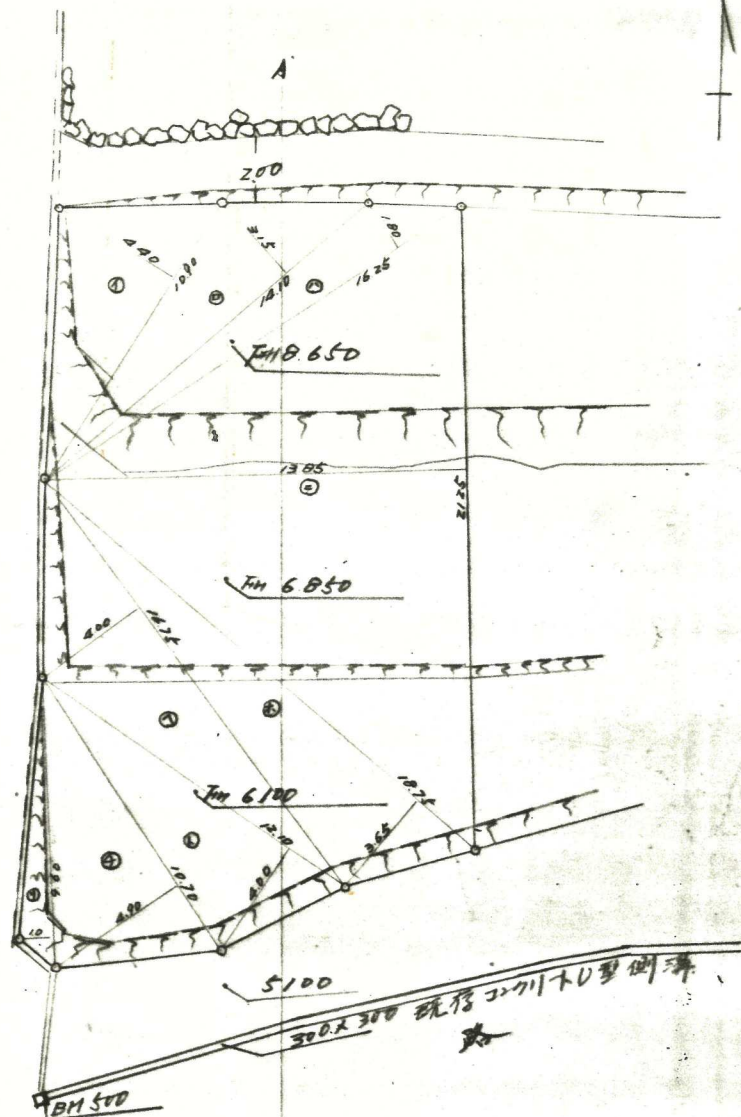


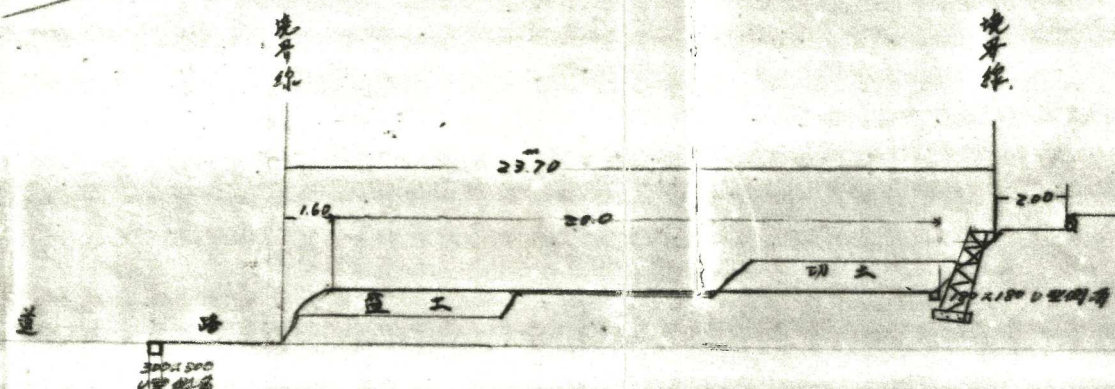
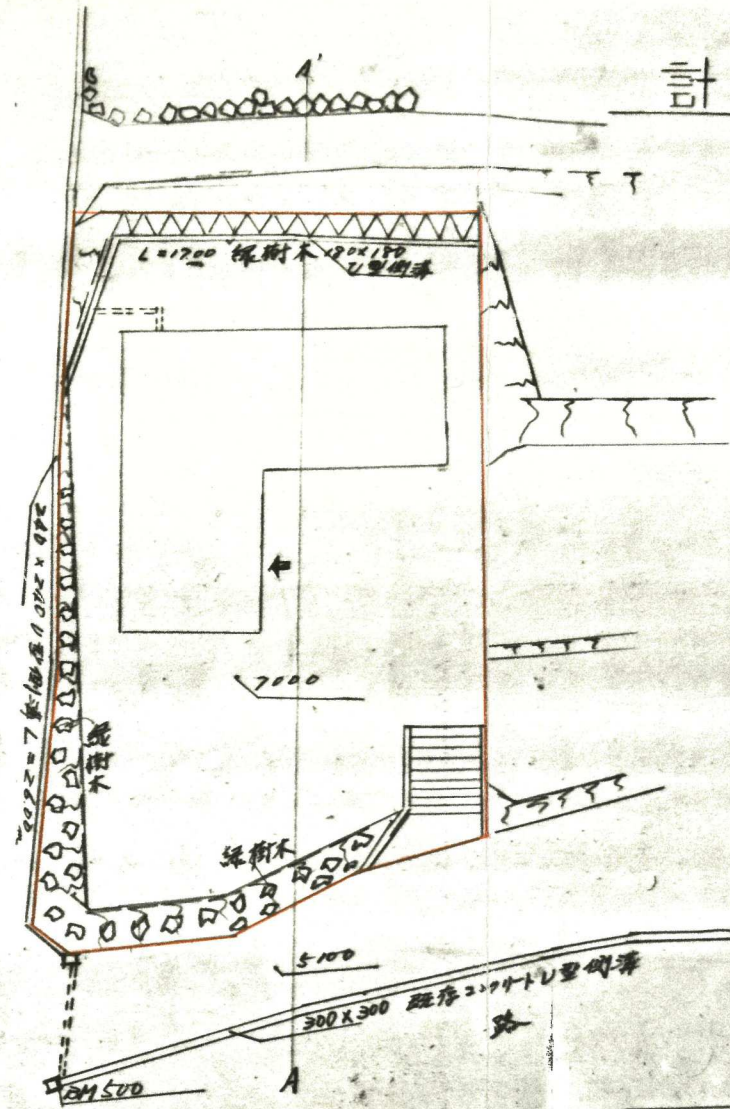
現況 1/250

S=1/250



求 積		
①	10.90 x 4.40	= 47.9600
②	14.10 x 3.15	= 44.4150
③	16.25 x 1.80	= 29.2500
④	21.25 x 12.85	= 273.3125
⑤	18.75 x 3.65	= 68.4375
⑥	16.75 x 4.00	= 67.0000
⑦	12.10 x 4.00	= 48.4000
⑧	10.70 x 4.90	= 52.4300
⑨	9.60 x 1.0	= 9.6000
計		= 661.805
2.7m		= 330.9025

計画



54-56